

RESOLUTION NO. 03-77

**RESOLUTION CREATING RURAL SPECIAL IMPROVEMENT MAINTENANCE
DISTRICT TO BE KNOWN AS R.S.I.D. #701M
PHEASANT BROOK SUBDIVISION**

WHEREAS, the Board of County Commissioners of Yellowstone County, Montana, met in regular session and executed a Resolution of Intent to Create a Rural Special Improvement Maintenance District #701M for Pheasant Brook Subdivision, as described in Exhibit A and more particularly shown in Exhibits B and C (maps) and,

WHEREAS, the Clerk and Recorder published the Notice of the passage of Resolution of Intent to Create the District in the Billings Gazette on June 13th and June 20th, 2003, and mailed a copy of the Notice to every person, firm or corporation owning property in the District; and,

WHEREAS, the Board of County Commissioners finds, determines and declares that:

1. The public interest or convenience requires the creation of a Rural Special Improvement Maintenance District as hereinafter described;
2. The costs of providing maintenance shall be borne by owners of the property included within the boundaries of the Rural Special Improvement Maintenance District with all existing and future lots being assessed an equal amount on a per lot basis;
3. The purpose of forming the District is to provide the maintenance, preservation, and repair of the roadways and control of noxious weeds and maintenance of park property located within the boundaries of this District;
4. The Commissioners have been presented with a valid Petition to create the proposed District;

NOW, THEREFORE, BE IT RESOLVED by the Board of County Commissioners of Yellowstone County as follows:

1. The Commissioners have acquired jurisdiction to create a Rural Special Maintenance District No. 701M to provide for the annual maintenance, operation and preservation of the roadway system and control of noxious weeds and maintenance of park property. The costs are more particularly described in Exhibit E and F. The estimated costs shown do not preclude other eligible street and park maintenance expenditures.
2. All of the costs of the District shall be assessed equally on a per lot basis for all existing and future lots. (See Exhibit D.) The boundaries of this District are shown on the map attached as Exhibit B and described in Exhibit A.
3. The number of the Rural Special Maintenance District thereof shall be No. 701M.

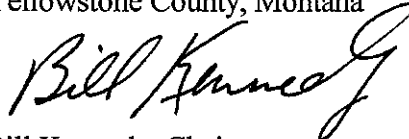
Page 2
Resolution Creating
R.S.I.D.# 701M

4. All lots accessing their property from the streets will benefit from proposed R.S.I.D. and shall be assessed for road and park maintenance. All lots will be assessed an equal amount based upon the total cost of the maintenance.

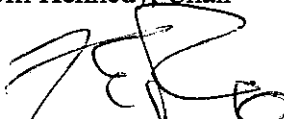
PASSED AND ADOPTED by the Board of County Commissioners of Yellowstone County, Montana, this 24th day of June, 2003.

Board of County Commissioners
Yellowstone County, Montana

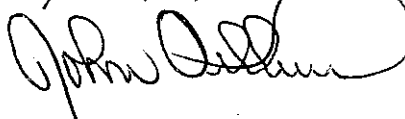
(SEAL)



Bill Kennedy, Chair

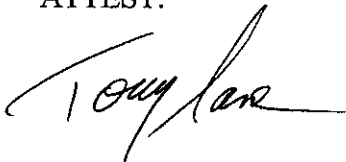


Jim Reno, Sr., Member



John Ostlund, Member

ATTEST:



Tony Nave
Clerk and Recorder

EXHIBIT A

RESOLUTION OF INTENTION TO CREATE R.S.I.D. #701M (PHEASANT BROOK SUBDIVISION)

LEGAL DESCRIPTIONS

Lots 1, 2, 3, 4, 5, 6 Block 1;

Lots 1, 2, 3, 4, 5, 6, 7, 8, 9, 10, 11, 12, 13, 14, 15, 16, 17, 18 Block 2

Lots 1, 2, 3, 4, 5, 6, 7, 8, 9, 10, 11, 12, 13, 14, Block 3

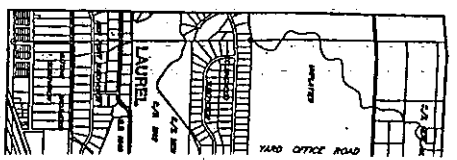
Lots 1, 2, 3, 4, 5, 6, 7, 8, 9, 10, 11, 12, 13, 14, Block 4

Lots 1, 2, 3, 4, 5, 6 Block 5

Lots 1, 2, 3, 4, Block 6

Lots 1, 2, 3, 4, 5, 6, 7, 8 Block 7

RESOLUTION OF INTENT TO CREATE RSID 701M-PHEASANT BROOK SUBDIVISION
 EXHIBIT B: STREET MAINTENANCE MAP

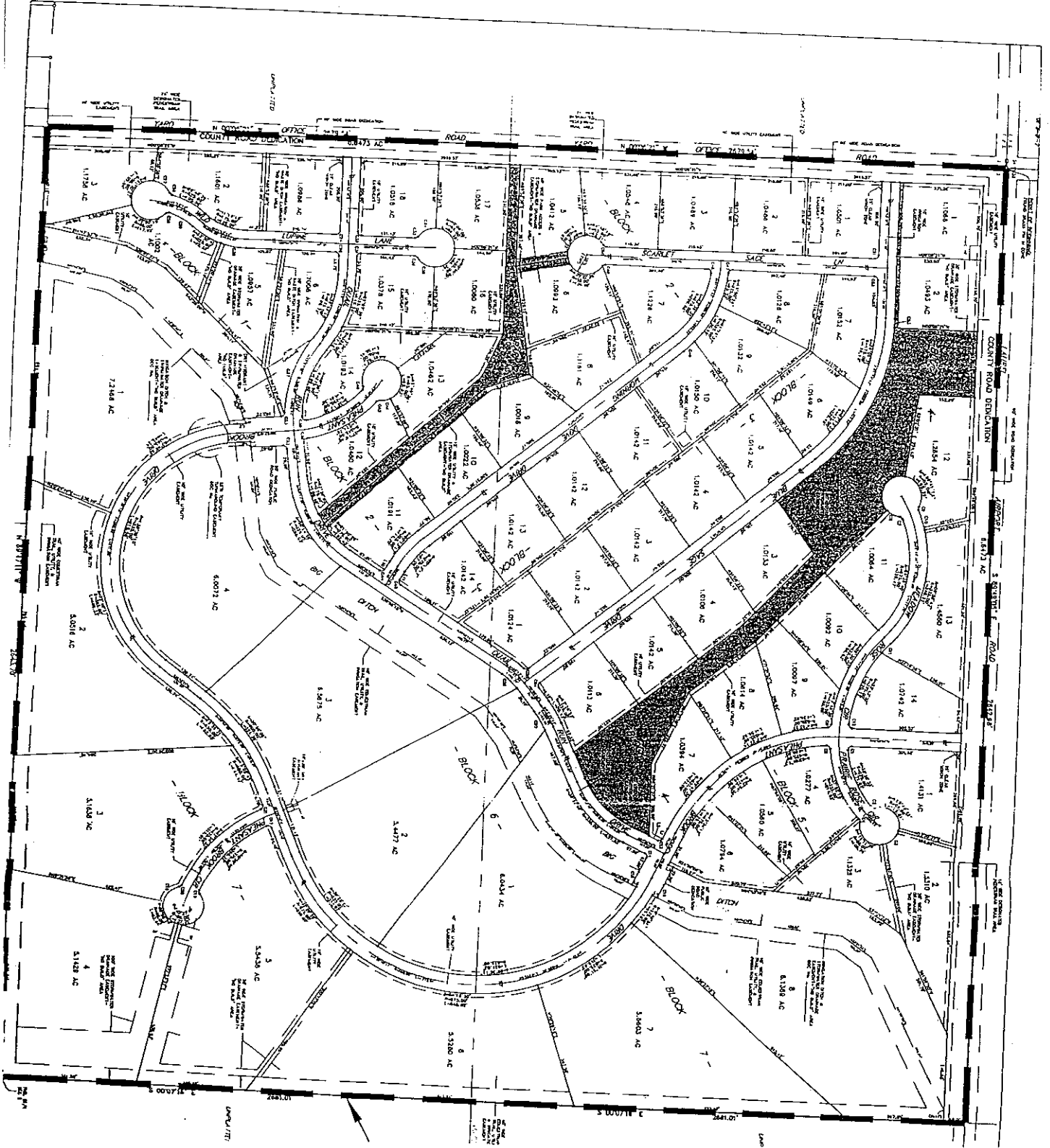


SOLID HAT
 STREET AN
 DRAINAGE
 MAINTAINET

RSID BOUNDA

SC

RESOLUTION OF INTENT TO CREATE RS1D 701M-PHEASANT BROOK SUBDIVISION
EXHIBIT C: PARKS MAINTENANCE MAP



PETITION TO ESTABLISH A RURAL SPECIAL IMPROVEMENT DISTRICT (RSID)

SECTION C
ESTIMATED ANNUAL MAINTENANCE COST

FALL MAINTENANCE:

ACTIVITY	ESTIMATED COST
Snow Plowing/Ice Control	\$ 750.00
Bridge Maintenance	\$ 500.00

WINTER MAINTENANCE:

ACTIVITY	ESTIMATED COST
Snow Plowing/Ice Control	\$ 1,500.00
	\$

SPRING MAINTENANCE:

ACTIVITY	ESTIMATED COST
Snow Plowing/Ice Control	\$ 750.00
Bridge Maintenance	\$ 500.00

SUMMER MAINTENANCE:

ACTIVITY	ESTIMATED COST
Chip Seal/Crack Sealing	\$ 6,000.00
Weed Control	\$ 1,000.00

TOTAL ESTIMATED ANNUAL MAINTENANCE COST: \$11,000.00

RESOLUTION OF INTENT TO CREATE RSID 701M-PHEASANT BROOK SUBDIVISION
 EXHIBIT F. PARKS MAINTENANCE ESTIMATE COSTS
 PETITION TO ESTABLISH A RURAL SPECIAL IMPROVEMENT DISTRICT (RSID)

SECTION C
 ESTIMATED ANNUAL MAINTENANCE COST

FALL MAINTENANCE:

ACTIVITY	ESTIMATED COST
Professional Monitoring and Regulation	\$ 500.00
Maintenance of Park Improvements, Stormwater Facilities, and Aquifer Recharge Facilities	\$ 500.00

WINTER MAINTENANCE:

ACTIVITY	ESTIMATED COST
Professional Monitoring and Regulation	\$ 500.00
Maintenance of Park Improvements, Stormwater Facilities, and Aquifer Recharge Facilities	\$ 500.00

SPRING MAINTENANCE:

ACTIVITY	ESTIMATED COST
Professional Monitoring and Regulation	\$ 500.00
Maintenance of Park Improvements, Stormwater Facilities, and Aquifer Recharge Facilities	\$ 500.00

SUMMER MAINTENANCE:

ACTIVITY	ESTIMATED COST
Professional Monitoring and Regulation	\$ 500.00
Maintenance of Park Improvements, Stormwater Facilities, and Aquifer Recharge Facilities	\$ 500.00

TOTAL ESTIMATED ANNUAL MAINTENANCE COST: \$4,000.00